

RATED CAPACITIES



WARNING

PAY ATTENTION TO OVERTURNING WHEN OPERATE OVER FRONT AND SIDE AREA.

4LAYERS - ()

6LAYERS - (•)

WORKING RADIUS (M)	BOOM LENGTH			
	5.3 M	8.45 M	11.6 M	14.7 M
2.5	• 12,000			
3.0	• 10,000	6,200		
3.5	• 8,750	5,400	3,200	
4.0	• 7,500	4,700	3,100	2,800
4.5	6,550	4,250	3,000	2,700
5.0	(5.02)5,600	4,100	2,900	2,600
6.0		3,800	2,800	2,450
7.0		3,400	2,700	2,300
8.0		(8.17)3,250	2,600	2,200
9.0			2,500	2,100
10.0			2,400	2,000
11.0			(11.3)2,350	1,900
12.0				1,850
13.0				1,800
14.0				1,750
15.0				(14.5)1,700
16.0				
17.0				
18.0				

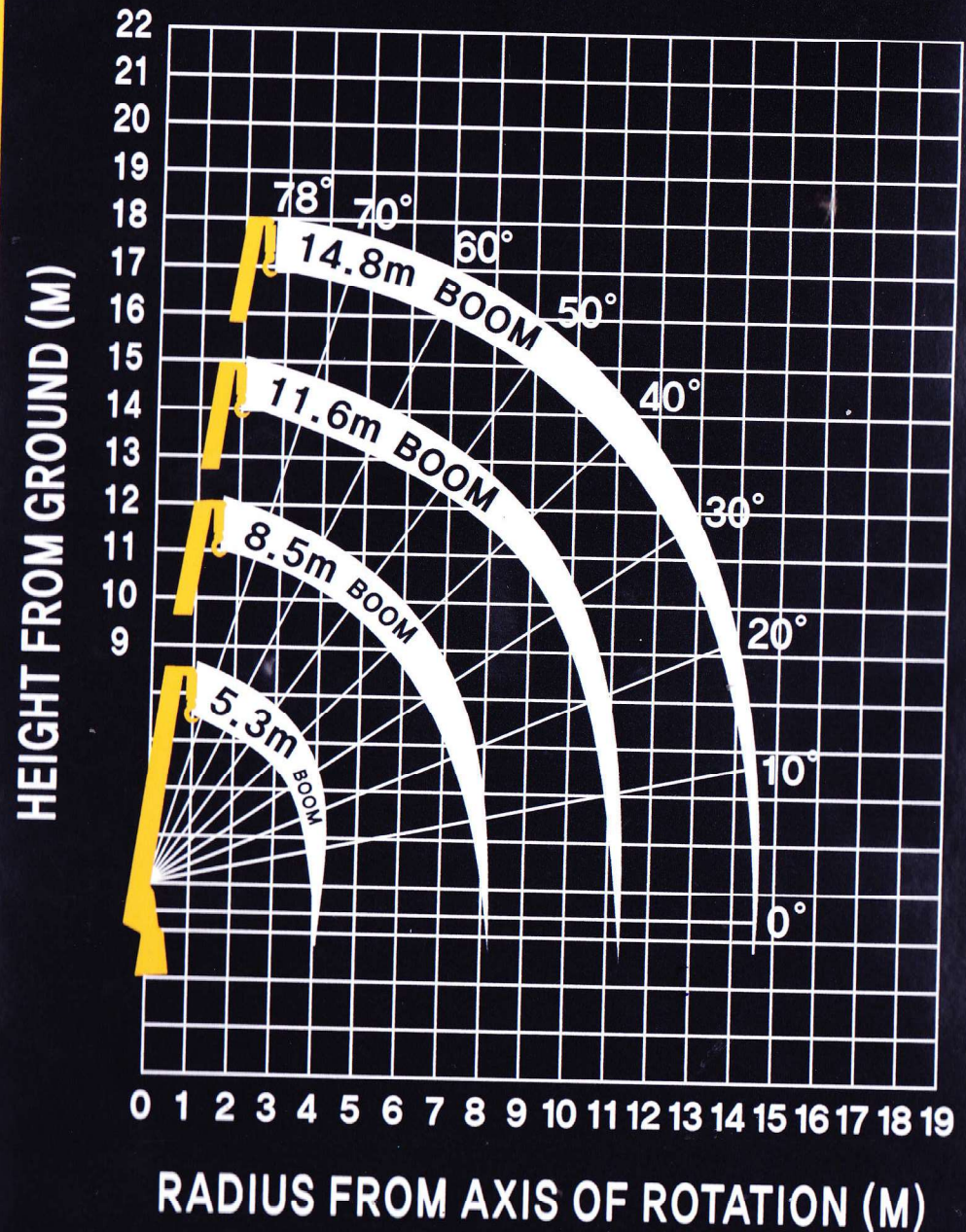
NOTES

- FULLY EXTEND ALL OUTRIGGER ON SOLID AND EVEN SURFACE.
- THE MASS OF THE HOOK SLINGS AND ALL SIMILARLY USED LOAD HANDLING DEVICES MUST BE ADDED TO THE MASS OF THE LOAD.
- THE ABOVE NUMERICAL VALUES OF RATED CAPACITIES ARE BASED ON CRANE STRENGTH ONLY.

THE RATED CAPACITIES BASED ON STABILITY MAY LOWER THAN THOSE IN THE ABOVE TABLE DEPENDING ON THE LOADING CONDITIONS AND THE TYPES OF THE CHASSIS.

2724 / S3112088

WORKING RANGE DIAGRAM



2724 / S311207B